

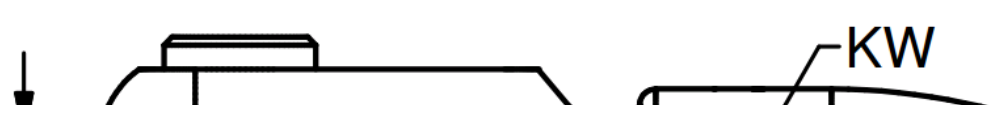


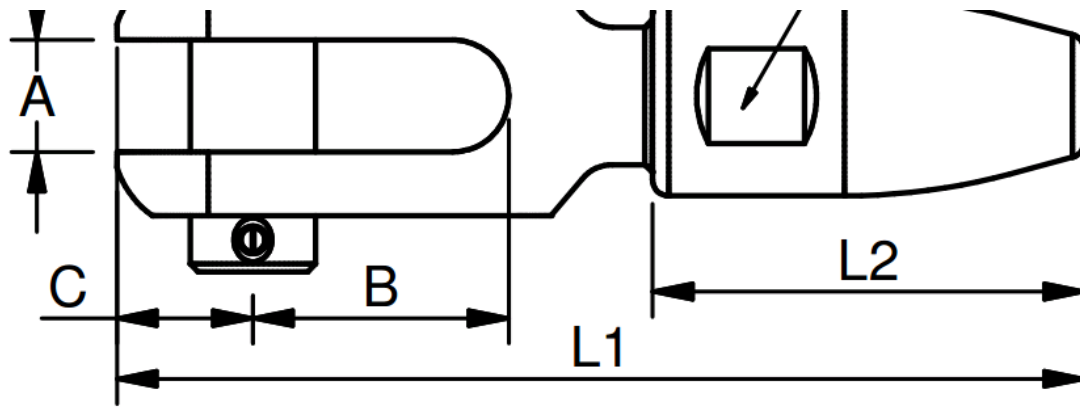
SWAGELESS CONE FORK TERMINALS

High Polished Stainless Steel – AISI 316



TECHNICAL DRAWING





DATA TABLE

SWAGELESS CONE FORK TERMINALS

ART. NO.		WIRE	PIN	A	B	C	KW	L1	L2	BL/KG	KG/100
SC840804	4	5/32"	8	6.5	16	9	12	62	27	2200	6.1
SC841047		3/16"	9.5	9	21	11	14	73	30	2800	10.6
SC841005	5		9.5	9	21	11	14	73	30	2800	10.6
SC841355		7/32"	12.7	11	26	13.5	17	90	38	4400	18
SC841306	6		12.7	11	26	13.5	17	90	38	4400	18
SC841363		1/4"	12.7	11	26	13.5	17	90	38	4400	18
SC841307	7	9/32"	12.7	11	29	14.5	19	104	46	6000	26.2
SC841308	8	5/16"	12.7	11	30	13.5	22	112	54	6000	31.7
SC841608	8	5/16"	16	14	32	17	22	120	54	8000	42
SC841995		3/8"	19	18	35	21	27	142	64	11000	70.6
SC841910	10		19	18	35	21	27	142	64	11000	70.6
SC841911		7/16"	19	18	39	21	33	162	82	17000	108.5
SC841912	12		19	18	39	21	33	162	82	17000	108.5
SC841913		1/2"	19	18	39	21	33	162	82	17000	108.5
SC842214	14	9/16"	22	20	45	25	37	187	89	23000	157.2
SC842516	16	5/8"	25.4	22	47	26.5	42	200	100	28000	215.1
SC842819	19	3/4"	28	27	59	32.5	44	236	115	30000	292
SC843522	22	7/8"	34.8	32	72	70	50	275	125	38000	487.4
SC843526	26	1"	34.8	32	72	40	66	292	150	48000	693