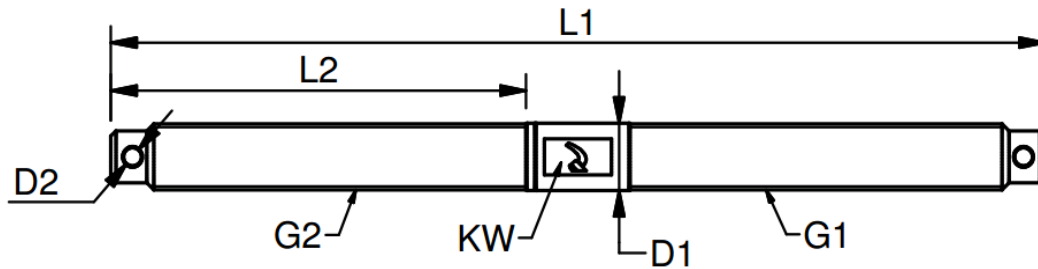


Double threaded pin

Polished stainless steel – AISI 316

Technical drawing



Datatable

DOUBLE THREADED PIN														
F	R	W	M	ART. NO.	G1	G2	D1	D2	KW	L1	L2	BL/KG	KG/100	PACK
			•	930408AHV	5/16"	5/16" LH	8	2,8	6	130	57	4,8	4,8	10
			•	930610AHV	3/8"	3/8" LH	10	2,8	8	144	63	7,8	7,8	10
			•	930711AHV	7/16"	7/16" LH	12	3,5	10	157	68	11,8	11,8	10
			•	930812AHV	1/2"	1/2" LH	13	3,5	11	181	80	17,6	17,6	10
			•	931016AHV	5/8"	5/8" LH	17	4,5	15	223	100	34,5	34,5	10

