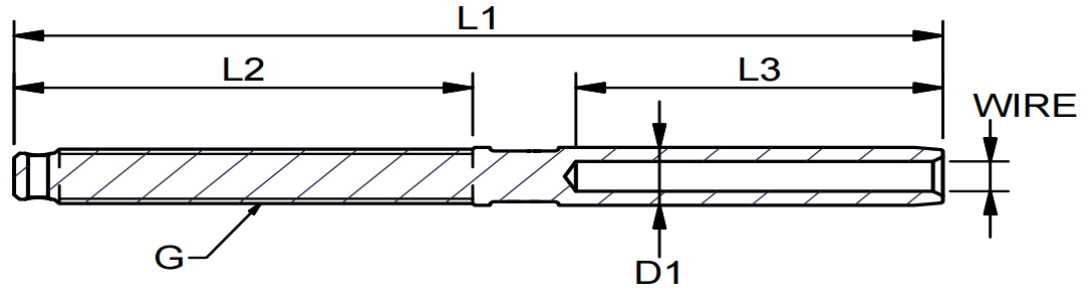


Thread terminals UNF

Stainless steel – AISI 316

Technical drawing



Datatable

THREAD TERMINALS UNF														
F	R	W	M	ART. NO. RIGHT	ART. NO. LEFT	WIRE	G	D1	L1	L2	L3	BL/KG	KG/100	PACK
			•	930306A	940306A	3	1/4"	6,35	100	48	38	1300	2,2	BULK
			•	933206A	943206A	1/8"	1/4"	6,35	100	48	38	1300	2,2	BULK
			•	930406A	940406A	4 - 5/32"	1/4"	7,5	110	48	45	1300	2,5	BULK
			•	930408A	940408A	4 - 5/32"	5/16"	7,5	117	57	45	1700	3,8	BULK
			•	930508A	940508A	5 - 3/16"	5/16"	9	125	57	51	2200	4	BULK
			•	930510A	940510A	5 - 3/16"	3/8"	9	130	63	51	2400	5,3	BULK
			•	930610A	940610A	6	3/8"	12,58	145	63	64	3400	8,4	BULK
			•	936310A	946310A	1/4"	3/8"	12,58	145	63	64	3400	8,3	BULK
			•	930611A	940611A	6	7/16"	12,58	157	68	64	4600	10	BULK
			•	930711A	940711A	7 - 9/32"	7/16"	14,2	162	68	70	4600	12,7	BULK
			•	930612A	940612A	6	1/2"	12,58	162	80	64	5400	10,8	BULK
			•	936312A	946312A	1/4"	1/2"	12,58	162	80	64	5200	11	BULK
			•	930712A	940712A	7 - 9/32"	1/2"	14,2	170	80	70	6100	14	BULK
•				930812D**	940812D**	8 - 5/16"	1/2"	13	185	80	83	4600	14,8	BULK
•			•	930812A	940812A	8 - 5/16"	1/2"	16	185	80	83	6100	19,2	BULK
•			•	930816A	940816A	8 - 5/16"	5/8"	16	203	100	83	8700	25,9	BULK
			•	939516A	949516A	3/8"	5/8"	17,8	210	100	89	8700	31,1	BULK
			•	931016A	941016A	10	5/8"	17,8	212	100	89	9700	30,1	BULK
			•	939520A	949520A	3/8"	3/4"	17,8	230	120	89	10200	38,7	BULK
			•	931020A	941020A	10	3/4"	17,8	230	120	89	9700	39,1	BULK
			•	931120A	-	7/16"	3/4"	20	254	120	110	12600	50,7	BULK
			•	931220A	941220A	12	3/4"	20	249	120	105	11400	47,9	BULK
			•	931220AX*	941220AX*	12	3/4"	21,4	265	120	120	14200	48,6	BULK

THREAD TERMINALS UNF														
			•	931222AX*	-	12	7/8"	21,4	283	140	120	14200	70,8	BULK
			•	931320A*	941320A*	1/2"	3/4"	21,4	266	120	120	12900	48,6	BULK
			•	931422A	941422A	14	7/8"	25	308	140	140	15900	78,7	BULK
			•	931625A	941625A	16 - 5/8"	1"	28	363	170	160	19400	126	BULK
			•	931927A	941927A	19 - 3/4"	1 - 1/8"	34,5	425	180	200	27600	210	BULK
			•	932230A	942230A	22 - 7/8"	1 - 1/4"	40,5	480	200	230	34600	313	BULK
			•	932636A	942636A	26 - 1"	1 - 3/8"	46	550	220	280	42400	470	BULK
			•	932842A	942842A	28	1 - 5/8"	5	639	270	300	64000	682	BULK

* Note: Terminal OD. = 21,4 mm

** Note: Terminal OD = 13 mm use tool Art. No.: DUBACC

The user is responsible for choosing the proper cable diameter and for correct assembly.

