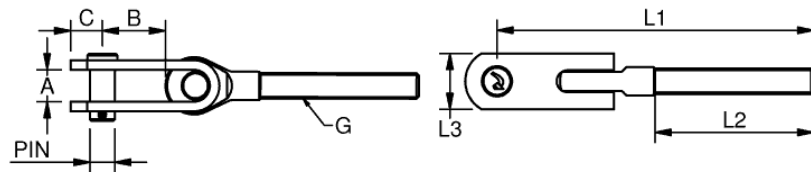


Thread toggle

Polished stainless steel – AISI 316

Technical drawing



Datatable

THREAD TOGGLES																
F	R	W	M	ART. NO. RIGHT	ART. NO. LEFT	G	PIN	A	B	C	T	L1	L2	L3	BL/KG	KG/100
		•		023206B	033206B	M6	6	8	17	8	3	88	47	14	1200	5
		•		023208B	033208B	M8	8	10	25	9	3	105	57	18	2200	8,3
		•		023210B	033210B	M10	9,5	12	27	12	4	128	63	22	3500	15,4
•		•		023212XB	033212XB	M12	12,7	18	33	18	4	154	80	30	5100	30,5
•		•		023214B	033214B	M14	12,7	18	33	18	4	172	90	30	6900	33,3
•		•		023216XB	033216XB	M16	16	20	41	20	6	199	100	35	9400	63
		•		023220XB	033220XB	M20	19	24	43	25	8	228	120	40	14700	111

Threaded toggles used to terminate a rigging screw or other attachment where flexible angles are required. Available with left handed and right handed threads.

